

**FOUNDATION UNIVERSITY COLLEGE OF DENTISTRY
ISLAMABAD**



**STUDY GUIDE
ORAL MEDICINE
3RD YEAR BDS**

TABLE OF CONTENTS

S. No.	Section
1.	Mission of Department
2.	Learning Outcomes
3.	Teaching & Learning Methodologies
4.	Learning Resources
5.	Faculty of Department/Organogram
6.	Course Outline and Learning Objectives
7.	Clinical Rotation & Demonstrations
8.	Assessment Structure

Mission:

Department of oral medicine is committed to provision of professional services through prompt diagnosis, referrals, and emergency patient care. Besides we are actively involved in mentorship of young minds through inculcation of proper diagnosis and management approach among students.

Introduction:

Oral medicine (also known as dental medicine or oral & maxillofacial medicine) is a specialty focused on the mouth and adjacent structures. It lies at the interface between medicine and dentistry, and also involves management of oro-facial conditions related to systemic diseases and developmental disabilities. Our goal is the delivery of safe and quality dental care, and promoting a positive attitude towards oral health and dental care. With the growing needs of the today's world, it is absolutely important that teaching strategies are constructed to match the needs of the learners and enhance their academic achievements. We want to ensure effective teaching that is flexible, creative and in line with principles of adult learning. Our institute is determined to make students completely aware of the prevalent diseases in Pakistan so they are capable of advising and conducting appropriate management and prevention of oral diseases.

Learning Outcomes of Course of Oral Medicine:

By the end of this course of oral medicine, students of third year BDS will be able to:

- Obtain relevant medical & dental history from patients.
- Perform intra-oral & extra-oral examination of patients.
- Interpret investigations and radiographs.
- Establish the differential diagnoses for oral lesions.
- Identify preventive treatment needs of a patient.

TEACHING & LEARNING MODALITIES

Teaching and learning methods are primarily focused more on promoting active learning through active participation of the learner. Students must actively take charge of their own learning, seek guidance and performance feedback from tutors, and routinely conduct self-assessment of their own learning needs. In addition to the theoretical knowledge, students must also train to develop their relevant clinical skill; skill training will be conducted through various teaching and learning methods. Following methods will be used for knowledge component:

1. Large Group Interactive Sessions (LGIS)
2. Small Group Interactive Sessions (SGIS)
3. Self-Directed Learning (SDL)

Following teaching modalities may be used for clinical/ small group teaching:

1. Live patient demonstrations by supervisors
2. Video demonstrations
3. Case based learning/clinical scenario based learning
4. Formative supervised learning events in clinical settings such as
 - a. Mini-CEX (mini clinical evaluation Exercise)
 - b. DOPS (direct Observation of procedural Skills)
 - c. OMP (one minute preceptor)
5. Role plays
6. Students' presentations
7. Discussions
8. Peer learning
9. Projects/ Assignments

A detailed list of skills to be learnt are given at the end of the guide, as well as in the student Log Book.

RECOMMENDED REFERENCE MATERIAL

Cawson's Essentials of Oral Pathology and Oral Medicine 9TH Edition

Tyldesley's Oral Medicine 5TH Edition

Burkit's Oral Medicine 13TH Edition

FACULTY OF DEPARTMENT

Head of department:

Assoc. Professor Dr. Muhammad Umair

Faculty members:

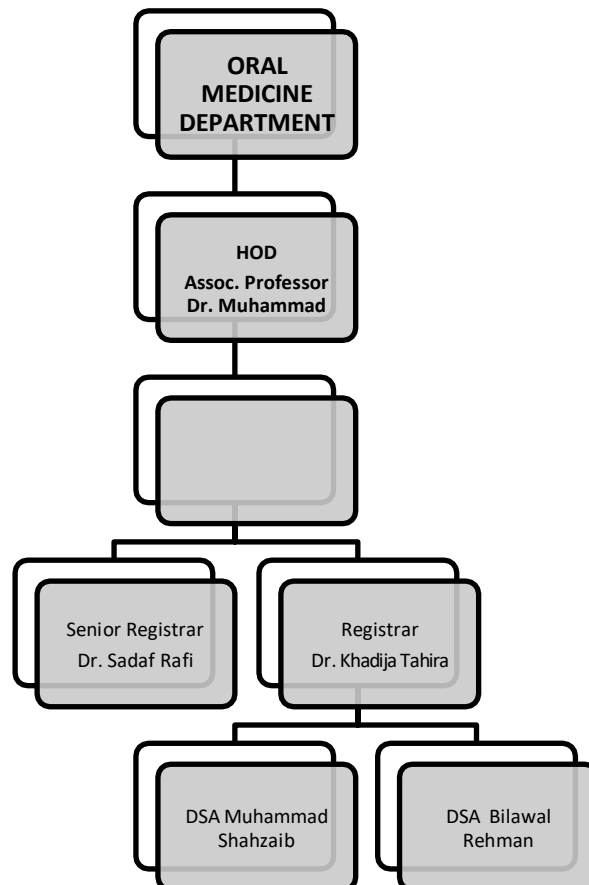
Senior Registrar Dr. Sadaf Rafi

Registrar Dr. Khadija Tahira

DSA Bilawal Rehman

DSA Muhammad Shahzaib

ORGANOGRAM



COURSE OUTLINE

Course Content	Learning Objectives By the end of this session, student must be able to:	Instructional strategy	Assessment method
1) Introduction to Oral Medicine & its role a. Evaluation of patient b. History taking	<ul style="list-style-type: none"> • Demonstrate grasp of the principles of Oral Medicine and their significance. • Classify the focus areas of Oral Medicine. • Obtain appropriate information for the evaluation of patient condition. • Outline process of intra and extra-oral examination. • Perform clinical examination of dental patient. 	LGIS(2) SGIS(2) Demo(2)	MCQs SEQs SAQs OSCE
2) Principles of Investigation & Diagnosis a. Patient assessment b. Examination and diagnosis c. Treatment planning	<ul style="list-style-type: none"> • Determine appropriate investigations related to oral diseases. • Appreciate the role of investigations in diagnosis and treatment planning. • Conduct investigations relevant to patient history. • Formulate a differential diagnosis. 	LGIS(1) SGIS(2) Demo(2)	MCQs SEQs OSCE
3) Hard Tissue Pathology a. Disorders of tooth development b. Dental caries	<ul style="list-style-type: none"> • Define tooth development disorders. • Outline management of disorders of tooth development. • Define and classify caries. • Diagnose caries. 	LGIS(2) LGIS(2) LGIS(2)	MCQs SAQs

Course Content	Learning Objectives By the end of this session, student must be able to:	Instructional strategy	Assessment method
e. Oral pre malignancy f. Oral Cancers g. Diseases of Salivary glands h. Common benign mucosal swellings i. Soft tissue tumors j. Oral pigmented lesions		LGIS(2) LGIS(2) LGIS(2) LGIS(1) LGIS(1) LGIS(1)	SAQs OSCE
5) Systemic disease in dentistry a. Anaemias, leukaemias and lymphomas b. Haemorrhagic disorders c. Immunodeficiency d. Allergy, autoimmune and lymphadenopathy e. Cardiovascular Respiratory diseases & antibiotic prophylaxis f. Gastrointestinal and liver disease nutritional deficiencies & renal diseases g. Endocrine disorders and pregnancy h. Pain and neurological disorders	<ul style="list-style-type: none"> • Discuss General features oral manifestations & managements. • Discuss General features oral manifestations & managements. • Discuss General features oral manifestations & managements. • Classify types General features oral manifestations& managements. • Discuss General features oral manifestations & managements. Latest regimen for antibiotic prophylaxis • Discuss General features oral manifestations & managements precautions related to systemic diseases. 	LGIS(1) LGIS(2) LGIS(1) LGIS(1) LGIS(1) LGIS(1)	MCQs SEQs SAQs OSCE

Course Content	Learning Objectives By the end of this session, student must be able to:	Instructional strategy	Assessment method
i. Complications of systemic drug treatment j. Medical emergencies in Dentistry	<ul style="list-style-type: none"> • Discuss General features oral manifestations & management. • Discuss General features oral manifestations & management. • Illustrate Clinical features systemic & oral manifestations • Discuss Clinical features & Management 	LGIS(1) LGIS(1) LGIS(1)	

CLINICAL ROTATION & DEMONSTRATIONS

NO	LEARNING OBJECTIVES	LEARNING MODALITY
	By the end of clinical rotation sessions, students will be able to:	
1.	Establish Patient history taking Perform Clinical Examination	Live patient demo Mini CEX CBD
2.	Perform Temporomandibular joint Examination.	Live patient demo DOPS
3.	Conduct Examination of swelling & ulcers.	Live patient demo DOPS
4.	Interpret Radiography.	Demonstration
5.	Perform management of Infections.	Demonstration
6.	Perform Examination of Salivary Glands.	Live patient demo DOPS
7.	Perform Examination of Cranial Nerves.	Live patient demo OMP DOPS
8.	Identify Facial Neuropathy.	Live patient demo DOPS
9.	Identify Pulpitis.	Demonstration
10.	Establish clinical aspects of Oral manifestations of systemic diseases.	Demonstration
11.	Perform Management of medical emergencies.	Demonstration
12.	Execute Awareness exercise on “World Oral Health Day” regarding dietary advice and oral hygiene measures to patients at FFH.	SGD/ Assignment

Assessment Strategy and Marks Distribution

THEORY MARKS DISTRIBUTION:

Total Marks of MCQs = 40 Marks

Total Marks of SEQs = 50 Marks (Each SEQ of 5 Marks)

Internal Assessment: 10 Marks

Total Marks of Theory: 100 Marks

PRACTICAL MARKS DISTRIBUTION:

Total Marks of OSPE = 40 Marks

Total Marks of Viva = 50 Marks (25 Marks Internal Examiner, 25 Marks External Examiner)

Internal Assessment: 10 Marks

Total Marks of Viva: 100 Marks

FOUNDATION UNIVERSITY COLLEGE OF DENTISTRY & HOSPITAL

Defense Avenue, DHA Phase -1

Islamabad 44000, Pakistan

Website: <https://www.fui.edu.pk/>, Facebook: @fucdoofficial

Email: info@fui.edu.pk, msa_fumc@fui.edu.pk,

Contact No: +92 51 111 384 211, Radio: FM 101.8